

An Area Agent's Perspective on Pest and Pathogen Emergencies

Erin R. Eure

Area Specialized Agent, Commercial Fruits & Vegetables

Northeast Region

NC State Extension

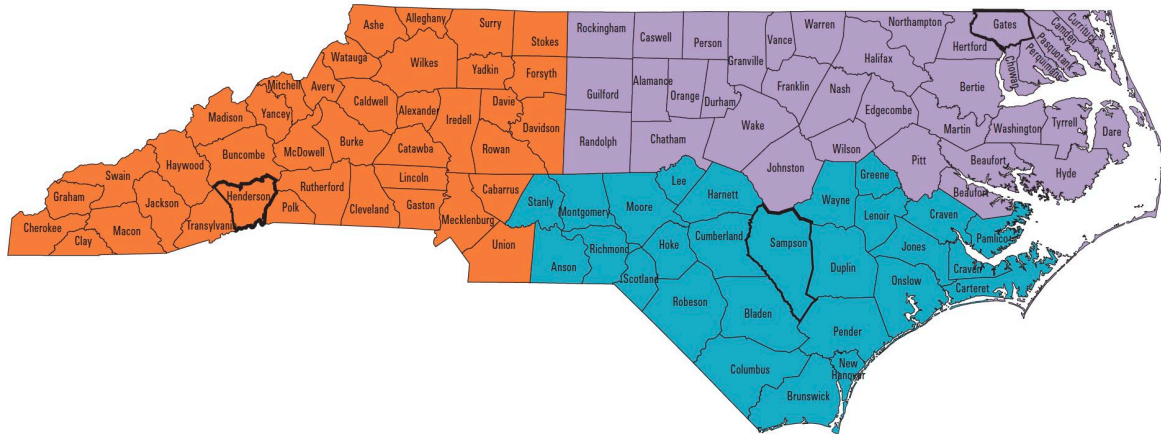


N.C. A&T
STATE UNIVERSITY

NC STATE
UNIVERSITY

In General

- Farm Visits
 - problem calls – Agents/Growers
 - casual calls/visits – “scouting”
- Diagnostics
 - field
 - office
 - lab

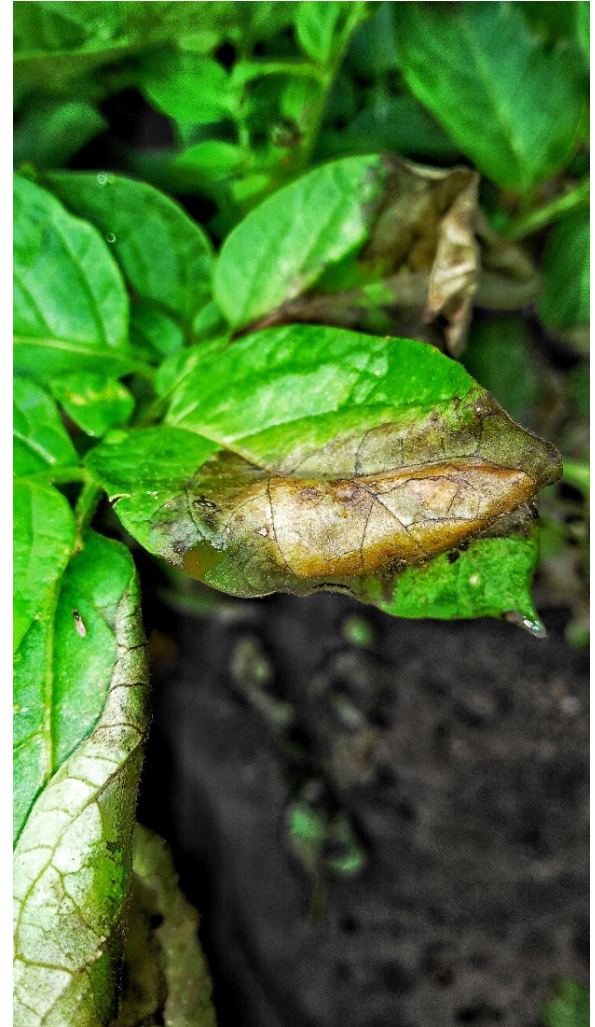


In General

- Timely
- Accurate, Unbiased
- Confidential?

Phytophthora nicotianae

- 2017 – potatoes
- Late Blight look-alike
- Alerts sent out
- Less aggressive
- Contaminated seed



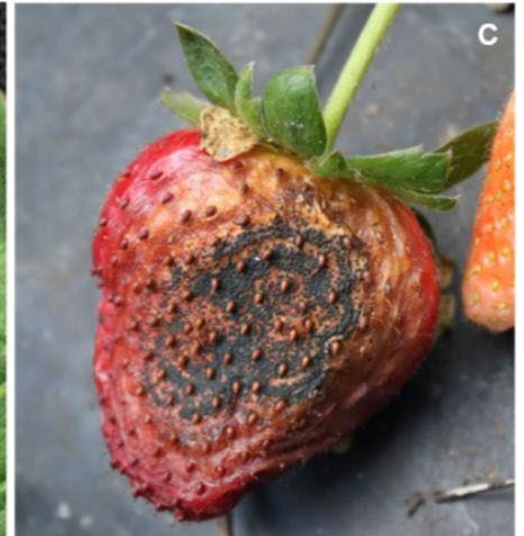
Cucurbit Downy Mildew

- Every year
- “Emergency”
 - cucumbers
- Tracking helps (industry)
 - general time frame
 - generally prepared



Strawberry *Neopestalotiopsis*

- 2018-2019 FL
- 2020-2021 GA, SC, NC
- Infected nursery source
- Range of impact:
mild – crop terminated



Guava Root Knot Nematode

- 2011 – soybean, cotton
- “Emergency”
 - sweetpotato ~ 2016
- 2018 Internal Quarantine
- Extreme confidentiality



Thank you!

