



U.S. Customs and
Border Protection



MITIGATING BIOTHREAT RISKS AT THE BORDER

AGRICULTURE PROGRAMS & TRADE LIAISON
OFFICE OF FIELD OPERATIONS

WHO WE ARE

- U.S. Customs and Border Protection, Office of Field Operations (OFO) manages 328 ports of entry across CONUS + 16 preclearance stations OCONUS
- Agriculture Programs & Trade Liaison manages OFO's agriculture mission
- **Mission:** Safeguard our borders and protect U.S. agriculture and the public from biological threats



BIOLOGICALS

- Genetic elements (chromosomes, genomes, plasmids, modified/ synthesized/ inactivated)
- Select agents and toxins
- Organisms and vectors
- Genetically-modified organisms
- Human and veterinary products
- Cell/tissue culture, live insects, animals, and plants
- Intergeneric microorganisms used for TSCA purposes



21 CFR



42 CFR



50 CFR



7 CFR & 9 CFR



HAZMAT TRANSPORTATION REGULATIONS FOR INFECTIOUS SUBSTANCES

49 CFR

- Proper shipping name and identification number
 - Category A: “Infectious substance, affecting animals, UN2900”
 - Category A: “Infectious substance, affecting humans, UN2814”
 - Category B: “Biological substance, Category B, UN3373”
- Proper labeling/marketing
 - “Infectious substance”
 - “Exempt human (or animal) specimen”
 - “Toxins extracted from living sources, liquid, n.o.s.”
 - “Toxins extracted from living sources, solid, n.o.s.”





On a Typical Day in FY 2019, CBP Processed:

- 1,124,075 passengers and pedestrians.
- 273,338 incoming privately owned vehicles
- 78,703 truck, rail, and sea containers
- 97,342 entries of merchandise at our air, land, and sea ports of entry
- Intercepted 314 exotic plant pests at U.S. ports of entry and 4,695 materials for quarantine: plant, meat, animal byproduct, and soil



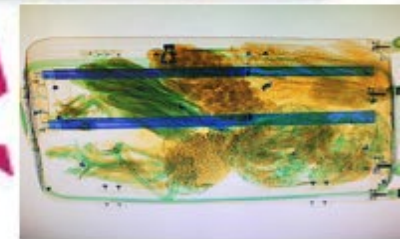
What Importers Need to Know:

- All import products are subject to inspection.
- Travelers must declare all agricultural and biological materials.
- The Importer or Shipper is responsible for complying with all applicable Federal regulatory requirements.
- Formal entry may be required.



INSPECTIONS

- Advanced Screening of Entries
- Document Review
- Non-intrusive Inspection
- Physical Inspection



CARGO INSPECTION

- Carrier and import inspections
- Entry regulatory compliance
- Quarantine agricultural materials
- Pests and Diseases
- Contraband
- Soil contamination
- Wood packing materials
- Regulated garbage
- Hitchhikers



PASSENGER INSPECTION

- Entry regulatory compliance
- Quarantine agricultural materials
- Pests and Diseases
- Contraband
- Footwear/soil contamination
- Biological materials
- Live animals
- CITES materials





PARTNER AT WORK



PUBLIC AND TRADE OUTREACH

- Ports of entry signage and video
- Workshops
- Information materials
- Webinars in trade events and scientific meetings
- Public-facing websites
 - www.cbp.gov
- CBPOne™ Mobile Referral

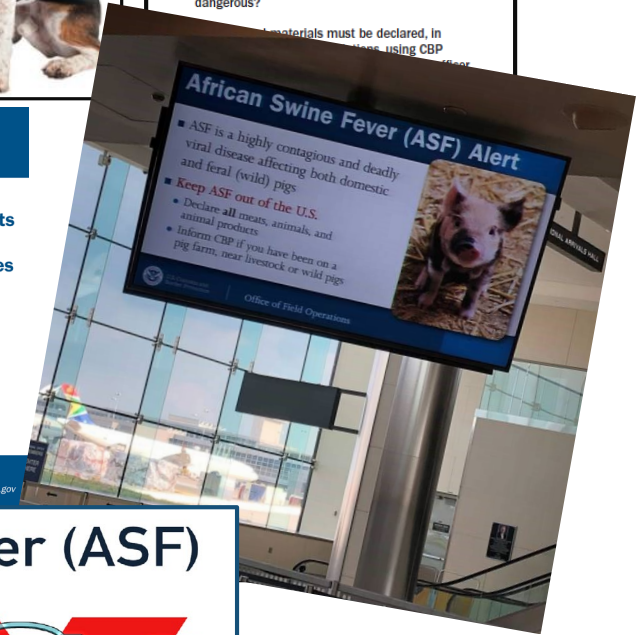
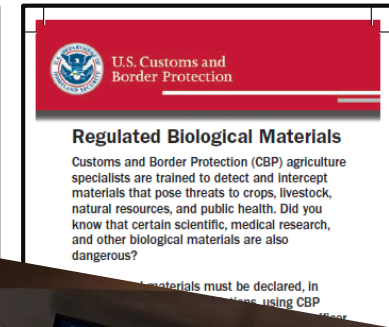


PREVENT FOREIGN ANIMAL DISEASES

- DECLARE** 🍌 Meat & Animal Products
- DECLARE** 🦌 Animal Hides & Trophies
- DECLARE** 🐕 Live Animals
- DECLARE** 🦠 Biological Agents

Foreign animal diseases can be harmful to United States agriculture.

U.S. Customs and Border Protection
www.cbp.gov



H1N1 Continues to Spread!

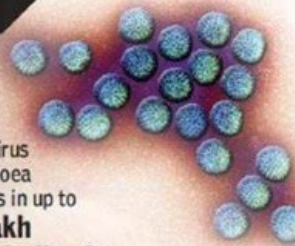
From April 12, 2009 to April 10, 2010, CDC estimated there were 60.8 million cases (range: 43.3-89.3 million), 274,300 hospitalizations (range: 195,086-402,719), and 12,469 deaths (range: 8868-18,306) in the United States due to the (H1N1)pdm09 virus.

COUNTERING THE

ROTAVIRUS THREAT

Diarrhoea caused by rotavirus kills **over 80,000 children** each year

Rotavirus diarrhoea results in up to **10 lakh hospitalizations**



Around 75 million rotavirus vaccine doses are required annually under the govt-run universal immunization programme

▶ India licensed its first locally developed rotavirus vaccine in 2013

▶ Rotavirus vaccine was introduced in the universal immunization programme in July 2014

▶ Local manufacturing is expected to bring down prices of rotavirus vaccine to one-fifteenth

CAPABILITY REQUIREMENTS:

- Evidence-driven, risk-based analytics tool:
 - Near-real time threat awareness and characterization
 - Risk contextualization and prioritization
 - Track footprint and attribution
- Viable non-intrusive detection tools
- Streamlined inter-agency coordination





U.S. Customs and
Border Protection



THANK YOU !

Romelito Lapitan, Ph.D.
Director, Agro/Bio-Terrorism Countermeasures
DHS-CBP-OFO-APTL
Email: romelito.lapitan@cbp.dhs.gov



U.S. Customs and Border Protection